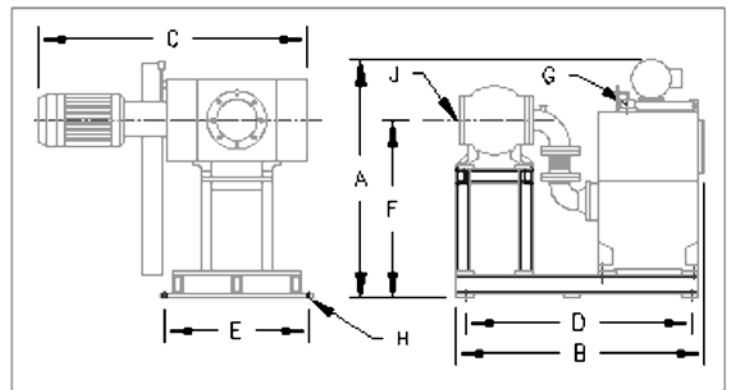
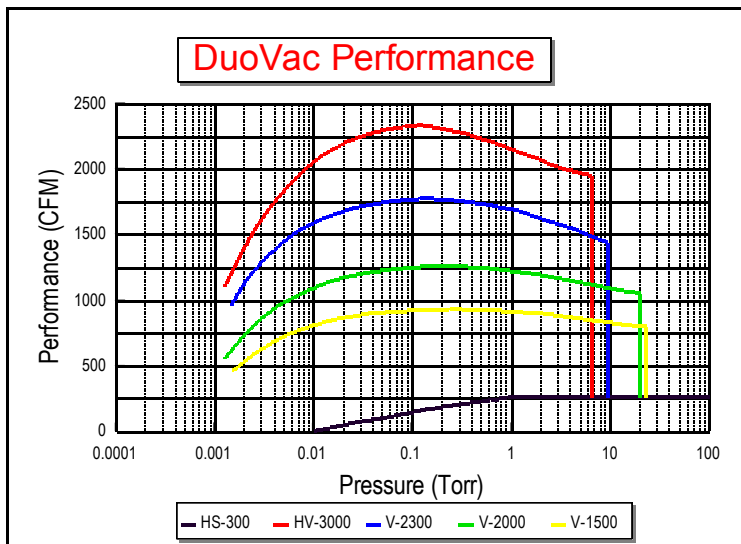


DuoVac Specifications	DuoVac 4000	DuoVac 3000	DuoVac 2000	DuoVac 1500
Free Air Displacement (CFM)	2765 / 300	2000 / 300	1410 / 150	1000 / 300
Maximum Performance (CFM)	2340 / 265	1780 / 265	1260 / 265	930 / 265
Standard Motor Power (HP)	15 / 10	10 / 10	10 / 10	5 / 10
Standard Drive Configuration	Direct / Belt	Direct / Belt	Direct / Belt	Direct / Belt
Standard Rotation Speed (RPM)	3600 / 490	3600 / 490	3600 / 490	3600 / 490
Standard Cut In Pressure (Torr)	6.5	10	20	25
Inlet and Outlet Size (ANSI Flange)	8"	6"	6"	6"
Cooling (booster / backing pump)	Air / 2gpm	Air / 2gpm	Air / 2gpm	Air / 2gpm
Dimension A (Inches)	55	55	55	55
Dimension B (Inches)	56.5	56.5	56.5	56.5
Dimension C (Inches)	64	58.9	53.4	49.7
Dimension D (Inches)	51.38	51.38	51.38	51.38
Dimension E (Inches)	33	33	33	33
Dimension F (Inches)	40.75	40.75	40.75	40.75
Dimension G (pump exhaust)	3" NPT	3" NPT	3" NPT	3" NPT
Dimension H (Inches)	7/8 Dia Holes	7/8 Dia Holes	7/8 Dia Holes	7/8 Dia Holes
Dimension J (pump inlet)	8" Flange	6" Flange	6" Flange	6" Flange
All systems include a Hull HS-300 rotary piston backing pump and an Aerzen booster pump.				



A Better Piston Pump Choice

- ✓ Improved design including steel belt guard, larger oil site port, no freeze plugs to leak, water jacket clean-out ports and optional fail safe atmospheric vacuum break and water miser assemblies.
- ✓ Quieter operation with valve deck noise reduction option.
- ✓ Interchangeable with Stokes 412 including foot print, inlet and outlet location and shaft seal and valve deck wear components.

A Better Booster Pump Choice

- ✓ Direct drive motor operation reduces seal maintenance and eliminates belt noise and maintenance.
- ✓ Quieter operation with motor noise reduction option.
- ✓ Tough air-cooled design allows variable frequency drive control option.
- ✓ Variable frequency drive option reduces cycle time by starting the booster at atmosphere.

A Better Package Choice

- ✓ Designed for higher uptime, and reduced maintenance through better drive choices, better control choices and better component choices.
- ✓ Whole package variable frequency drive option reduces operating and wear costs during low demand periods.
- ✓ Interchangeable foot print and inlet and outlet locations with Stokes 1722 and 1738 packages. Direct drive motor can be mounted on either side.